



St Mary's Catholic Primary Academy

September - Newsletter

Email: office@smp.nelcmail.co.uk and Telephone: 01472 357982
School Website: <https://www.saintmarysprimarygrimsby.co.uk/>

Dear Parents/carers,

I hope this brief newsletter finds you all rested and settled back for the start of another academic year. September celebrates The Feast of Our Lady of Sorrows which we remembered on September 15th, the day after was the Feast of the Exaltation of the Holy Cross. This proximity in the liturgical calendar highlights the inseparable connection between the Passion of Christ and the sufferings of His mother. The feast day invites the faithful to meditate on Mary's sorrows and to offer prayers of reparation for the sins of the world.

The start of September brings a newness of life and joy- an anticipation of the new dawn and for many children, a huge transition - especially for our Year 1 children. I should like to thank the Year 1 team for adapting the curriculum to enable children to make this transition more swiftly and effectively

There are many dates and contact numbers on this newsletter and at the end of each month, the school will resume sending out its Celebratory Newsletter. There will be documentation sent out to parents in respect to various policies of which you all need to be aware, and I hope to ensure this is all completed by the end of the month.

In respect to SEND, Mrs Steeper is currently supporting the Acting Headteacher, Mrs Stacie Barnsley, at St Joseph's, Cleethorpes and will be there intermittently for the next three weeks. If there are any queries for SEND, please do not hesitate to contact myself in respect to this and I will arrange a meeting with yourself at the earliest convenience.

Every good wish

Joseph O'Connor

Attendance

Welcome back to the new school year. Last year the school's attendance was good but with your help we can try and improve even further.



Just a couple of reminders.

Please can your child arrive before 8:55am so they can enter the school through the playground and be in class ready to start learning at 9:00am. If your child has an appointment and this cannot be made out of school hours then please, when possible, bring your child into school before the appointment and bring them back straight after. We would like you to bring proof of the appointment so the absence can be authorised.

Just a reminder, if your child misses any part of their learning time then they will not get a 100% attendance award for the term/year. Last year we had a lot of children arriving late to school. If you are having difficulties getting your child to school on time, then please contact the school office and we will try to help you.



DATES FOR THE DIARY

(More important dates to be added
please keep checking Class Dojo)

-

Thursday 25th September

Great Athletes Visit St Mary's

-

Friday 5th December

Swimming lessons to start



St Mary's Catholic Primary Academy

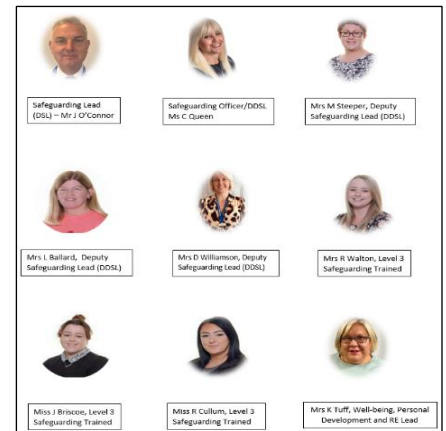
September - Newsletter

Email: office@smp.nelcmail.co.uk and Telephone: 01472 357982
School Website: <https://www.saintmarysprimarygrimsby.co.uk/>

SAFEGUARDING AT ST MARY'S

If you have any concerns regarding safeguarding, please contact our designated Safeguarding Team. At St Mary's our safeguarding lead is Mr. J O'Connor, safeguarding officer is Miss C Queen and deputy-safeguarding officer Mrs. M Steeper.

Level 3 safeguarding trained are Mrs R Walton, Miss J Briscoe and Miss B Cullum. Mrs K Tuff is our well-being, personal development and RE lead.



INFORMATION YOU NEED TO KNOW

BREAKFAST CLUB

Please book breakfast club via Arbour App. It starts at 7.45am - 8.45am and children have the chance to have breakfast and join in on some fun activities with their friends. It is £1 per day.

SCHOOL START AND FINISH

School Day Timings:

Nursery - Morning Session 8.45am to 11.45am and Afternoon Session 12.10pm to 15:10pm

Reception - 8.45am - 15.10pm

Key Stages 1 and 2 - Gates open at 8:40 and will be locked at 8:55. School starts at 9.00 - 15.20 pm.

If you and your child arrive after 9am please come to the office where you will sign your child in and they will go straight to class. A teacher will collect your child if they are in nursery or reception.

PERMISSIONS TO TAKE HOME AND MEDICAL FORMS

Please can any new information be kept updated. It is parents/carers responsibility to keep all information updated for your child/children. Especially any new medical information and permission to take home.

UNIFORM

If you require any uniform, please contact Uniform Direct on 01472 347800. Address is 54 Victoria Street, Grimsby DN31 1BL. We do NOT sell uniform at school.

LUNCHES

Please book lunches via ParentPay. Meals must be ordered 2 weeks in advance. If your child would like packed lunch, please bring it in a named lunch box.

AFTERSCHOOL CLUBS

These will be available to book via Arbor Choir – Mon, Multisport – Tues and Basketball – Weds.