



St Mary's Catholic Primary Academy

February - Newsletter

Email: office@smp.nelcmail.co.uk and Telephone: 01472 357982
School Website: <https://www.saintmarysprimarygrimsby.co.uk/>

Dear Parents, Carers, and School Community,

As we have welcomed the start of 2026, it has been wonderful to see our pupils settle so positively into the new year. Their enthusiasm for learning and their growing knowledge and understanding are evident across the school, and we are proud of the commitment they show each day.

As we approach the beginning of Lent, our school community continues to prepare with reflection and purpose. Throughout February, we will support our pupils in deepening their understanding of this important liturgical season, encouraging them to grow in prayer, kindness, and self-discipline. We remain committed to upholding our school virtues and promoting the principles of Catholic Social Teaching, guiding the children to act with compassion and responsibility in their daily lives.

Father Robbie will lead a Service of Ashing in School for the children Wednesday 23rd February. During this time the children will also have the opportunity to go to Reconciliation as well.

Thank you for your ongoing support as we accompany our pupils on their Lenten journey.

Mrs S Barnsley – Deputy Headteacher



STAFF CAR PARK

It has been noticed that some parents are using the staff car park when picking up and collecting. This is a reminder that the staff car park is for staff and deliveries only. Please do not park or walk through the car park at any time. We request this to make sure you and your children remain safe at the start and end of the day.





St Mary's Catholic Primary Academy

February - Newsletter

Email: office@smp.nelcmail.co.uk and Telephone: 01472 357982
School Website: <https://www.saintmarysprimarygrimsby.co.uk/>

DATES FOR THE DIARY

(More important dates/times to be added please keep checking Class Dojo)

*Some sport competitions are for selected children only and you will be notified on dojo via Mrs Solomou if your child is selected.

Friday 6th February / Year 4 Swimming

-Year 5 Dance Festival (All Class) – (Clee Field Sports Hall/Walking)

-Number Day for NSPCC

Monday 9th February / Children's Mental Health Week – Own Clothes

Tuesday 10th February / Year 6 - Get it Glow (10/12 children) (Clee Academy)

Wednesday 11th February / Year 4 Swimming

-Year 2 - Get Glowing (10/12 children) (Clee Academy)

-Parents Evening

Thursday 12th February / Parents Evening

Friday 13th February / School Closed for Teachers Training Day

Monday 16th February – 20th February / Half Term

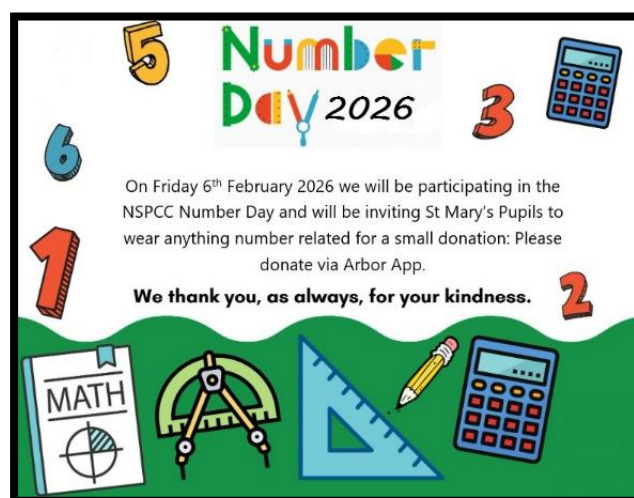
Monday 23rd February / Back to school

Wednesday 25th February / Year 2 Fishing Heritage Trip

Wednesday 4th March / Year 3 and Year 4 Girls Football



PLEASE DONATE VIA ARBOR - THANK YOU





St Mary's Catholic Primary Academy

February - Newsletter

Email: office@smp.nelcmail.co.uk and Telephone: 01472 357982
School Website: <https://www.saintmarysprimarygrimsby.co.uk/>

INFORMATION YOU NEED TO KNOW

BREAKFAST CLUB AND SCHOOL LUNCHES

Please book breakfast club via Arbor App. This runs from 7.45am and children have breakfast and join in on some fun activities with their friends. Lunches must also be booked on Arbor 2 weeks in advance.

AFTERSCHOOL CLUB

Please book afterschool clubs via Arbor App. These run from 3.30pm-4.30pm and collection from hall door. Parents must advise the office if any of their children in Year 5 or Year 6 are walking home.

PERMISSIONS TO TAKE HOME AND MEDICAL FORMS

Please can all information be kept updated. It is parents/carer responsibility to keep all information updated for your child/children, especially any new medical information. This can be seen on the Arbor App and you can request changes and updates on there.

UNIFORM

If you require any uniform, please contact Uniform Direct on 01472 347800. Address is 54 Victoria Street, Grimsby DN31 1BL.

WEATHER

With the cold weather please can children come to school in sensible warm clothing. Hats, gloves and a coat should be named. Please take care on the paths to and from school.

FORMS

Please can parents/carers fill and update the Pupil Consent Form. If you haven't

SCHOOL WEBSITE

<https://www.saintmarysprimarygrimsby.co.uk/> please visit the school website

SAFEGUARDING TEAM AT ST MARYS

Mr J O'Connor - Safeguarding Lead

Ms C Queen - Safeguarding Officer

Mrs S Barnsley - Safeguarding Lead

Mrs L Ballard - Deputy Safeguarding Lead

Mrs D Williamson - Deputy Safeguarding Lead

Mrs R Walton - Level 3

Miss J Briscoe - Level 3

Miss B Cullum - Level 3

Mrs K Tuff - Well-being, personal development and RE Lead





St Mary's Catholic Primary Academy

February - Newsletter

Email: office@smp.nelcmail.co.uk and Telephone: 01472 357982
School Website: <https://www.saintmarysprimarygrimsby.co.uk/>

MENU CHANGE - REMINDER

There is a slight change to the menu for when we return from February half term on Monday 23rd and Tuesday 24th February.

Monday 23rd February

If you have ordered below main or vegetarian

- Creamy Cheese and Tomato Pasta (main)
- Cheese and Tomato Pizza (vegetarian)
- Dessert - Crispy crackle Bar

It will be below

- Cheese & Tomato Pizza (main)
- Vegetarian Sausages & Mashed Potato with Gravy (vegetarian)
- Jacket Potato with Beans (same)
- Ham Sandwich (same)
- Cheese Sandwich (same)
- Dessert - Lemon Cookie



Tuesday 24th February

If you have ordered below main or vegetarian

- Chicken Korma & Rice (main)
- Lentil Tomato Pasta Bake (vegetarian)
- Dessert - Banana Marble Cake Meal

It will be below

- Roast Chicken & Mashed Potato (main)
- Cheese & Onion Pasty & Mashed Potato (vegetarian)
- Jacket Potato with Cheese (same)
- Ham Sandwich (same)
- Cheese Sandwich (same)
- Dessert – Cookie Cake



St Mary's Catholic Primary Academy

February - Newsletter

Email: office@smp.nelcmail.co.uk and Telephone: 01472 357982
School Website: <https://www.saintmarysprimarygrimsby.co.uk/>

CATHOLIC LIFE HERE AT ST MARY'S

During the month of January, the three teams have been very busy:

The Chaplaincy team have been working on a celebration of the Word about Diversity. We have been planning and scripting this ready to deliver to the whole school.

The School Council has been working hard also preparing for Children's mental health week. The team are very keen for everyone to know what it is that makes them feel calm and happy and that we all have a 'go to' activity when we just need a moment to take time to pause and to make ourselves feel a little bit better.

The Mini-Vinnies team have been busy also preparing for The Big Lent walk which starts after the February half term.

As a school, we are also aware that the Jubilee Year of Hope for 2025 has now ended. Pope Leo XIV has now launched the Special Jubilee Year of Saint Francis from 10th January 2026 to the 10th January 2027. This marks the 800th Anniversary of the death of Saint Francis of Assisi. The teams are now thinking about how we can include Saint Francis of Assisi in our way of life at Saint Mary's over the coming year.



THE BIG LENT WALK



St Mary's Catholic Primary Academy

February - Newsletter

Email: office@smp.nelcmail.co.uk and Telephone: 01472 357982
School Website: <https://www.saintmarysprimarygrimsby.co.uk/>

Let's Go Grimsby

Let's Go Grimsby would like to give families another opportunity to work together for 6 weeks course on healthy eating. Limited to 4 families per course. You will be working with the wellbeing services Grimsby and Miss Boyd. This course will allow parent/carers to work with their child/children and learn all new things regarding healthy eating. Under the name 'Let's Go Grimsby' the wellbeing club aims to create a fun, inclusive, family focussed environment. Unlike traditional programs, Let's Go! Grimsby avoids focusing on weight loss, instead celebrating the role of food in bringing people together. By promoting creativity, shared experiences, and a sense of community, the club is committed to enhancing wellbeing in a way that is accessible, enjoyable and free of judgement.

This course starts Tuesday 24th February at 3.30pm – 4.30pm and will continue for 6 weeks.

This course is Free!!! Every family that completes the 6-week course will receive a free slow cooker or an air fryer and much more.

Please contact Mrs Thompson via dojo or the school office to register your interest and to sign up. This course is first comes first serve basis.





St Mary's Catholic Primary Academy

February - Newsletter

Email: office@smp.nelcmail.co.uk and Telephone: 01472 357982
School Website: <https://www.saintmarysprimarygrimsby.co.uk/>

Let's Go Grimsby.





St Mary's Catholic Primary Academy

February - Newsletter

Email: office@smp.nelcmail.co.uk and Telephone: 01472 357982
School Website: <https://www.saintmarysprimarygrimsby.co.uk/>

RECEPTION

The children have really got stuck into our topic of "Wheels and Walls" they have loved exploring construction in both our indoor and outdoor provision. We have explored strength of different materials and linked this to the story of the Three Little Pigs. Miss Hughes and Miss Briscoe enjoyed watching the children retell the story using our puppets!



YEAR 1

In RE we have been exploring the Gospel of Saint Luke. We have acted out the stories of the visit to the Temple when Jesus was a baby, the boy Jesus in the Temple and when he preached in the Temple as an adult. We have created some lovely artwork from these pieces of scripture. We also thought about how we can be a light to others.

In computing we have been learning how to use the different drawing tools to create pictures. We created portraits and then created shapes to fill using the fill tool.

In Geography we have been learning about the physical and human made features of our school area. We have looked at aerial views of the areas around school. We compared our school area and Miss Boyd's old school area. Miss Boyd's school has a lot more physical features than our school which has a lot of human made features.





St Mary's Catholic Primary Academy

February - Newsletter

Email: office@smp.nelcmail.co.uk and Telephone: 01472 357982
School Website: <https://www.saintmarysprimarygrimsby.co.uk/>

YEAR 2

Our topic for Geography is Grimsby and Beyond. We started off recapping our knowledge of physical and human geographical features and then explored a major human feature of our local town, the harbour. To understand the purpose of a harbour children created their own testing, how boats are protected by the breakwater. We have also compared Grimsby to the nearest city, Hull, and children created posters to highlight Hull's geographical features.

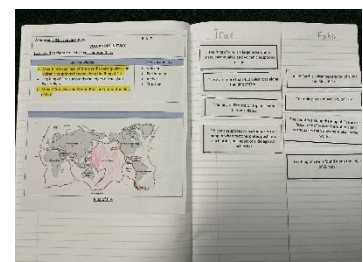
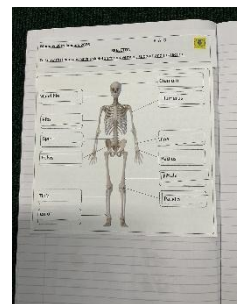
Science we have been learning about Animals, including humans. Children started off exploring animals and their offspring, noticing patterns in different animal types. We have then explored a few different life cycles starting off with our own and understanding growth and change from a baby to elderly. Since then, we have compared life cycles between humans, chickens, and frogs. In Mrs Solomou's PE lessons, we have been learning gymnastic skills such as travelling and balancing.



YEAR 3

In Science, the children have been learning all about mammals and have enjoyed exploring the human skeleton, discovering how our bones support and protect our bodies.

In Geography, Year 3 have been fascinated by volcanoes and learned about how they erupt and the impact they can have. Linking this to our English work, the children are now writing diary accounts imagining they were present during the volcanic eruption of Pompeii, using descriptive language to bring this dramatic event to life.





St Mary's Catholic Primary Academy

February - Newsletter

Email: office@smp.nelcmail.co.uk and Telephone: 01472 357982
School Website: <https://www.saintmarysprimarygrimsby.co.uk/>

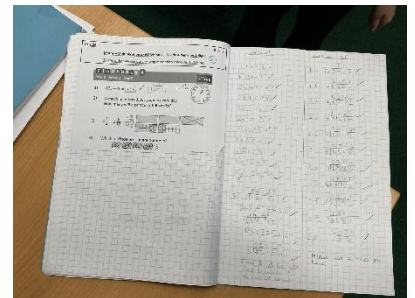
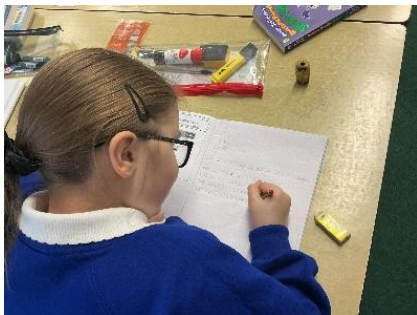
YEAR 4

As part of our Geography topic, *Rivers*, the children have been learning about the journey of a river and its key features. They have explored how landforms such as meanders and oxbow lakes are created. On 23rd January, the children took part in a local fieldwork walk to Grimsby Town centre, where they observed the River Freshney and identified some of its features in the local environment. Later in the term, the children will complete a comparative study of the River Freshney and the River Loire in France. They will examine and compare the rivers' physical features, their importance for tourism, and the threats faced by each river.



Year 5

This month, Year 5 have been enjoying learning how to do long multiplication and short division. Our love for Maths is really growing! In art we have been learning about artist Grant Wood and have been creating painting and colours in his style.





St Mary's Catholic Primary Academy

February - Newsletter

Email: office@smp.nelcmail.co.uk and Telephone: 01472 357982
School Website: <https://www.saintmarysprimarygrimsby.co.uk/>

Year 6

Have been working hard to understand fractions, decimals and percentages. They have been working collaboratively to complete problem solving and reasoning. We now know how to convert a fraction into a decimal and then into a percentage.

In English we have completed our news article. We needed to do some role play of working at the BBC studio in St Mary's, so we could practise delivering important news to the public. We relied on the chief editor to write our script.

In P.E, we have been practising our gymnastics. Sport's coach, Owen, came to show us some ways to develop our moves.

As part of our topic on the circulatory system, we dissected hearts to discover the chambers and the valve strings. We found the aortic valve extremely tough. We compared it to the size of our fist.



SPORTING ACHIEVEMENTS

Well done to our Years 3 and 4 children that took part in the indoor athletics at Franklin College they did a fantastic job coming third. Another well done to our a Year 3 and 4 dodgeball team who represented the school extremely well earning themselves a well deserved medal for the School Games Value, honesty.

